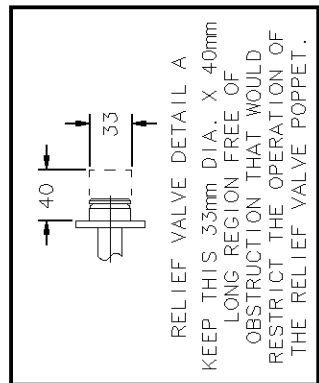
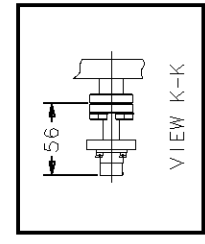


MATERIAL LEGEND	
DESIGNATION	MATERIAL
	ST. STL.
	ALUMINUM
	COPPER, OFHC

DIMENSIONS ARE IN  
MILLIMETERS (mm)  
UNLESS OTHERWISE SPECIFIED.



APPLICABLE SPECIFICATIONS:  
GENERAL PRODUCT SPECIFICATIONS - TBD  
CONFIGURATION SPECIFICATION - 265120A160  
SALES WORKSHEET - CP-16 1001

SHOWN WITH MOST COMMON ACCESSORIES  
REFER TO SALES WORKSHEET FOR OPTIONAL  
ACCESSORIES.

PROJECT: cryopumps\_cp16

OUTLINE DRAWING  
CP-16 CRYOPUMP ASSEMBLY  
50/60 HZ  
ISO 400

TITLE

REV.	CRSP NO.	DATE	BY	MFG.	YB	RGS	ERS	ENGR.

NO. 265120A160I00-C  
SHEET 1 OF 1

